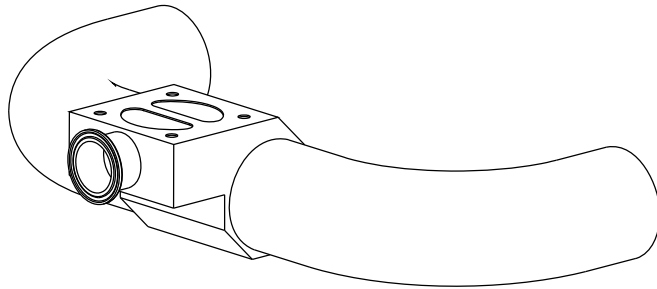
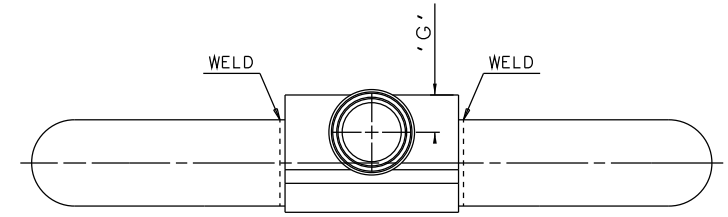
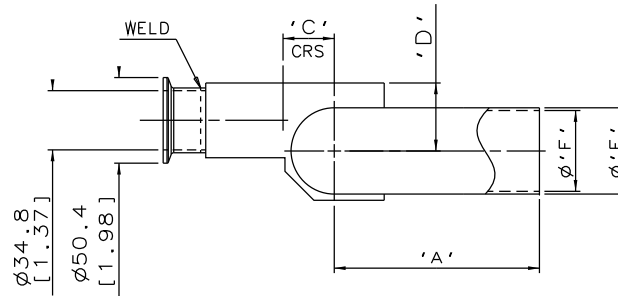
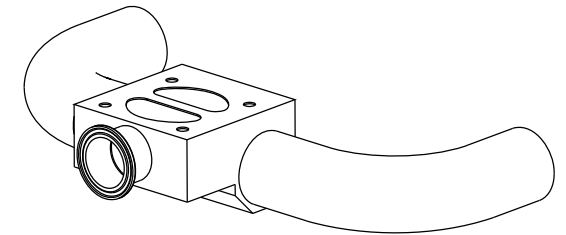
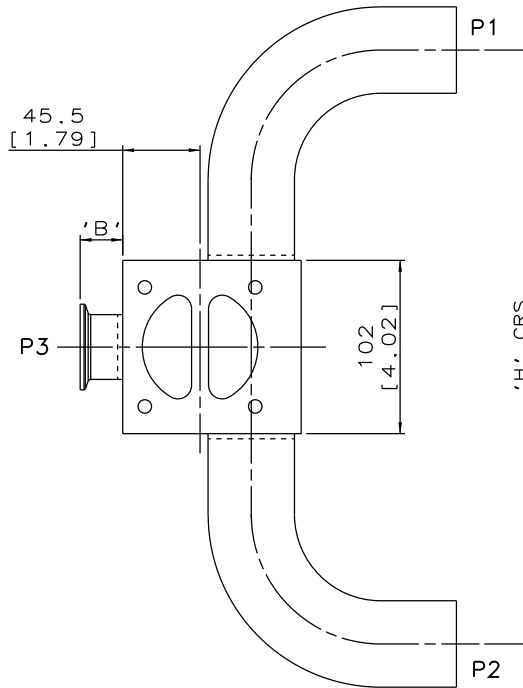


DN40/1.50  
MAINLINE ONLY



DN80/3.00 TO DN100/4.00  
MAINLINE ONLY



DN50/2.00 TO DN65/2.50  
MAINLINE ONLY

The information on this sheet is Private and Confidential and is the property of Crane Process Flow Technologies Limited and must not be published directly or indirectly in any manner whatsoever without the written permission of the Company and must not be used in any way detrimental to their interests.  
© Crane Process Flow Technologies

**CRANE** Process Flow Technologies  
A Crane Co. Company

**Saunders**  
The Science Inside

Title  
SCHEDULE OF LEADING DIMENSIONS FOR DN40/1.50  
WEIR POINT OF USE 'T' BODY COMPLETE WITH :  
MAINLINE : BUTT WELD OD TUBE ENDS  
BRANCH : DN40/1.50 HYGIENIC CLAMP END.

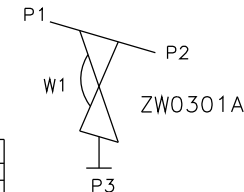
Drawn RI Date 14.10.11

Checked RND Date 21.03.12

First Angle Projection Method E

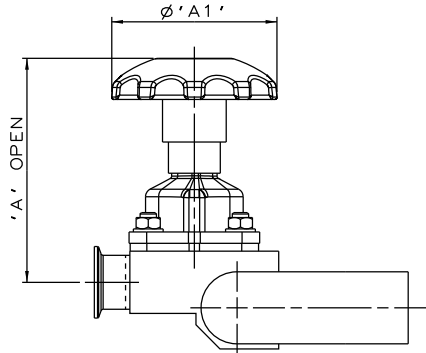
UNCONTROLLED IN  
HARD COPY FORMAT

Drawing No. WEB-045 Issue. 2

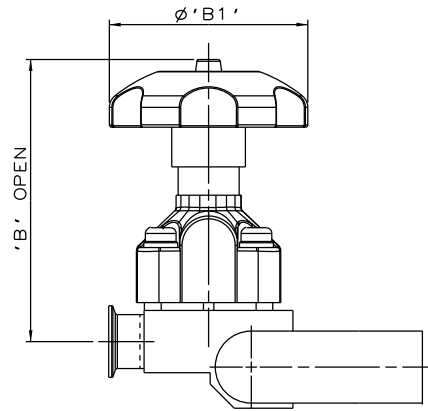


ORIENTATION AS  
PER P&ID DIAGRAM  
FOR OPTIMUM  
DRAINABILITY.

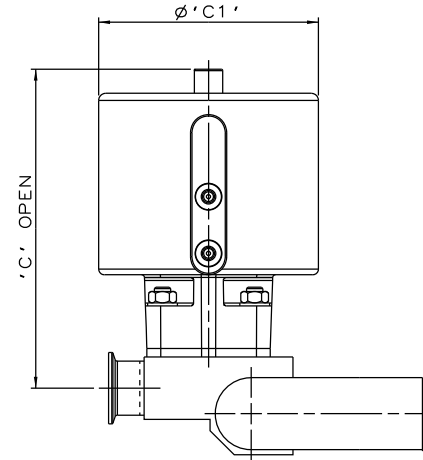
MAINLINE SIZE		A		B		C		D		øE		øF		G		H		BODY WEIGHT
mm	inch	mm	inch	mm	inch	mm	inch	mm	inch	mm	inch	mm	inch	mm	inch	mm	inch	Kgs
DN40	1.50	95.3	3.75	25.0	0.98	22.4	0.88	32.0	1.26	38.1	1.50	34.8	1.37	22.0	0.87	298.6	11.76	2.7
DN50	2.00	120.7	4.75	25.0	0.98	30.1	1.19	40.0	1.57	50.8	2.00	47.5	1.87	22.0	0.87	349.4	13.76	3.6
DN65	2.50	139.8	5.50	25.0	0.98	36.5	1.44	46.0	1.81	63.5	2.50	60.2	2.37	22.0	0.87	387.6	15.23	4.4
DN80	3.00	158.8	6.25	25.0	0.98	42.8	1.69	52.5	2.07	76.2	3.00	72.9	2.87	22.0	0.87	439.6	17.31	4.5
DN100	4.00	203.2	8.00	25.0	0.98	53.8	2.12	60.8	2.39	101.6	4.00	97.38	3.83	22.0	0.87	528.4	20.80	7.0



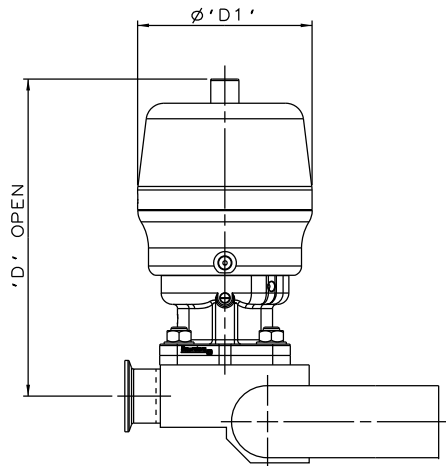
SS NON SEALED  
BONNET ASSEMBLY



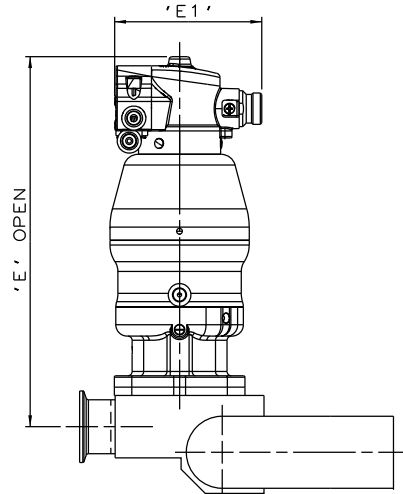
PES BONNET  
ASSEMBLY



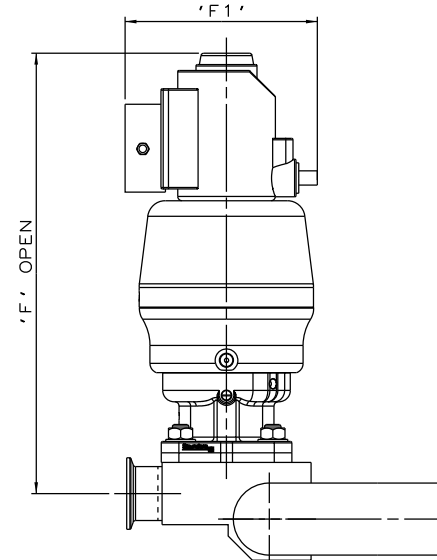
EC ACTUATOR  
(ALL MODES)



\*S360 ACTUATOR



\*S360 ACTUATOR  
WITH M-VUE SENSOR



\*S360 ACTUATOR  
WITH I-VUE SENSOR

The information on this sheet is Private and Confidential and is the property of Crane Process Flow Technologies Limited and must not be published directly or indirectly in any manner whatsoever without the written permission of the Company and must not be used in any way detrimental to their interests.  
© Crane Process Flow Technologies

**CRANE** Process Flow Technologies  
A Crane Co. Company

**Saunders**  
The Science Inside

Title  
SCHEDULE OF LEADING DIMENSIONS FOR DN40/1.50  
WEIR POINT OF USE 'T' BODY COMPLETE WITH :  
MAINLINE : BUTT WELD OD TUBE ENDS  
BRANCH : DN40/1.50 HYGIENIC CLAMP END.  
FITTED WITH TOPWORKS OPTIONS

Drawn JRD Date 29.09.16 UNCONTROLLED IN  
Checked RND Date 29.09.16 HARD COPY FORMAT

First Angle Projection Method E DO NOT SCALE Drawing No. WEB-045-ASSY Issue. 1

\*DIMENSIONS SHOW MAXIMUM ENVELOPE FOR ALL MODES

BRANCH SIZE		A		A1		B		B1		C		C1		D		D1		E		E1		F		F1	
mm	inch	mm	inch	mm	inch	mm	inch	mm	inch	mm	inch	mm	inch	mm	inch	mm	inch	mm	inch	mm	inch	mm	inch	mm	inch
DN40	1.50	158	6.22	120	4.72	199	7.83	140	5.51	225	8.85	155	6.10	224	8.82	123	4.84	275	10.83	103.8	4.09	311	12.24	135.5	5.33